

PSB-SB-487

## Chemical Properties

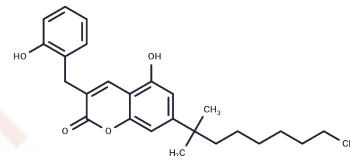
CAS No. : 1399049-81-0

Formula: C<sub>26</sub>H<sub>32</sub>O<sub>4</sub>

Molecular Weight: 408.53

Storage: Powder: -20°C for 3 years | In solvent: -80°C for 1 year

Actual storage temperature shall be subject to the COA.



## Biological Description

Description	PSB-SB-487 is antagonist of GPR55.
Targets(IC50)	Cannabinoid Receptor

## Solubility Information

Solubility	DMSO: 25 mg/mL (61.2 mM), Sonication is recommended. (< 1 mg/ml refers to the product slightly soluble or insoluble)
In vivo Formulation	10% DMSO+40% PEG300+5% Tween 80+45% Saline: 2 mg/mL (4.9 mM), Sonication is recommended. <i>Please add the solvents sequentially, clarifying the solution as much as possible before adding the next one. Dissolve by heating and/or sonication if necessary. Working solution is recommended to be prepared and used immediately. The formulation provided above is for reference purposes only. In vivo formulations may vary and should be modified based on specific experimental conditions.</i>

## Preparing Stock Solutions

	1mg	5mg	10mg
1 mM	2.4478 mL	12.239 mL	24.478 mL
5 mM	0.4896 mL	2.4478 mL	4.8956 mL
10 mM	0.2448 mL	1.2239 mL	2.4478 mL
50 mM	0.049 mL	0.2448 mL	0.4896 mL

Please select the appropriate solvent to prepare the stock solution, according to the solubility of the product in different solvents. Please use it as soon as possible.

Note: The dilution table applies only to solid products. For liquid products, please calculate the stock solution based on the stated concentration and/or density.

Reference

Rempel V , Volz N , Gl?Ser F , et al. Antagonists for the orphan G-protein-coupled receptor GPR55 based on a coumarin scaffold.[J]. Journal of Medicinal Chemistry, 2013, 56(11):4798-4810.

**Inhibitor · Natural Compounds · Compound Libraries · Recombinant Proteins**

This product is for Research Use Only· Not for Human or Veterinary or Therapeutic Use

Tel:781-999-4286 E\_mail:info@targetmol.com Address:34 Washington Street,Wellesley Hills,MA 02481