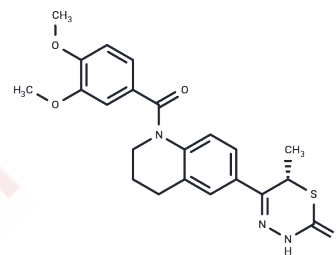


EMD57439

## Chemical Properties

CAS No. : 148714-88-9  
 Formula: C<sub>22</sub>H<sub>23</sub>N<sub>3</sub>O<sub>4</sub>S  
 Molecular Weight: 425.5  
 Storage: Powder: -20°C for 3 years | In solvent: -80°C for 1 year  
 Actual storage temperature shall be subject to the COA.



## Biological Description

Description	EMD57439 is a selective PDE-III inhibitor, showing no significant increase in c-AMP concentration and producing little change in Ca(50).
Targets(IC50)	PDE
In vitro	EMD 57033 (10 micromM) slightly increased the rate of relaxation (rate constant k1 changing from 24.0 +/- 2.9 s <sup>-1</sup> in control to 28.1 +/- 3.2 s <sup>-1</sup> ) but had no significant effect on the rate of activation (k1 = 9.6 +/- 0.9 s <sup>-1</sup> in control conditions, 9.7 +/- 1.6 s <sup>-1</sup> with EMD 57033).[2]

## Solubility Information

Solubility	DMSO: 22.5 mg/mL (52.88 mM),Sonication is recommended. (< 1 mg/ml refers to the product slightly soluble or insoluble)
------------	---

## Preparing Stock Solutions

	1mg	5mg	10mg
1 mM	2.3502 mL	11.7509 mL	23.5018 mL
5 mM	0.470 mL	2.3502 mL	4.7004 mL
10 mM	0.235 mL	1.1751 mL	2.3502 mL
50 mM	0.047 mL	0.235 mL	0.470 mL

Please select the appropriate solvent to prepare the stock solution, according to the solubility of the product in different solvents. Please use it as soon as possible.

Note: The dilution table applies only to solid products. For liquid products, please calculate the stock solution based on the stated concentration and/or density.

Reference

Kusakari Y, et al. Use of the Ca-shortening curve to estimate the myofilament responsiveness to Ca<sup>2+</sup> in tetanized rat ventricular myocytes. J Physiol Sci. 2006 ; 56(3):219-226.

Lipscomb-Allhouse S, et al. The effects of the inotropic agent EMD 57033 on activation and relaxation kinetics in frog skinned skeletal muscle. Pflugers Arch. 2001 ; 442(2):171-177.

**Inhibitor · Natural Compounds · Compound Libraries · Recombinant Proteins**

This product is for Research Use Only · Not for Human or Veterinary or Therapeutic Use

Tel:781-999-4286 E\_mail:info@targetmol.com Address:34 Washington Street,Wellesley Hills,MA 02481