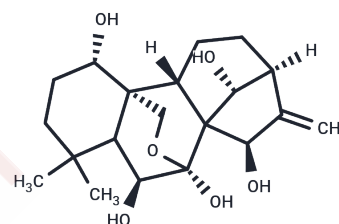


## Enmenol

## Chemical Properties

CAS No. :	28957-06-4
Formula:	C <sub>20</sub> H <sub>30</sub> O <sub>6</sub>
Molecular Weight:	366.454
Storage:	Powder: -20°C for 3 years   In solvent: -80°C for 1 year Actual storage temperature shall be subject to the COA.



## Biological Description

Description	Enmenol is a bioactive chemical.
-------------	----------------------------------

## Preparing Stock Solutions

	1mg	5mg	10mg
1 mM	2.7289 mL	13.6444 mL	27.2889 mL
5 mM	0.5458 mL	2.7289 mL	5.4578 mL
10 mM	0.2729 mL	1.3644 mL	2.7289 mL
50 mM	0.0546 mL	0.2729 mL	0.5458 mL

Please select the appropriate solvent to prepare the stock solution, according to the solubility of the product in different solvents. Please use it as soon as possible.

Note: The dilution table applies only to solid products. For liquid products, please calculate the stock solution based on the stated concentration and/or density.

## Reference

- Han QB, Li RT, Li ML, Mou YK, Tian QE, Li SW, Sun HD. Ent-kauranoids from *Isodon rubescens* var. *taihangensis*. *J Asian Nat Prod Res.* 2005 Feb;7(1):31-6. PubMed PMID: 15621599.
- Wu YX, Zhang W, Li JC, Liu N. Chemical constituents of flowers and fruits of *Rabdosia excisa*. *Chin J Nat Med.* 2012 Jan;10(1):43-7. doi: 10.1016/S1875-5364(12)60010-7. PubMed PMID: 23302530.
- Han QB, Li ML, Li SH, Mou YK, Lin ZW, Sun HD. Ent-kaurane diterpenoids from *Isodon rubescens* var. *lushanensis*. *Chem Pharm Bull (Tokyo).* 2003 Jul;51(7):790-3. PubMed PMID: 12843583.
- Feng C, Yan FL, Di XM, Sun PL. 1 $\alpha$ ,6 $\beta$ ,7 $\beta$ ,14 $\beta$ ,15 $\beta$ -Penta-hydr-oxy-7 $\alpha$ ,20-ep-oxy-ent-kaur-16-ene. *Acta Crystallogr Sect E Struct Rep Online.* 2009 Dec 12;66(Pt 1):o103. doi: 10.1107/S1600536809052490. PubMed PMID: 21579994; PubMed Central PMCID: PMC2980239.

**Inhibitor · Natural Compounds · Compound Libraries · Recombinant Proteins**

This product is for Research Use Only · Not for Human or Veterinary or Therapeutic Use

Tel:781-999-4286 E\_mail:info@targetmol.com Address:34 Washington Street,Wellesley Hills,MA 02481