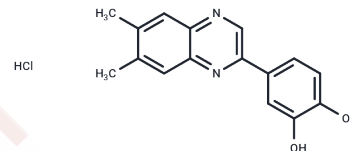


AG1433

Chemical Properties

CAS No. : 168836-03-1
 Formula: C₁₆H₁₅ClN₂O₂
 Molecular Weight: 302.76
 Storage: Powder: -20°C for 3 years | In solvent: -80°C for 1 year
 Actual storage temperature shall be subject to the COA.



Biological Description

Description	AG1433 is a tyrosine kinases inhibitor that acts as a direct and selective inhibitor of photosynthetic PEP carboxylase and an inhibitor of PDGFR- β , Flk-1, and angiogenesis.
Targets(IC50)	Others,PDGFR,VEGFR

Preparing Stock Solutions

	1mg	5mg	10mg
1 mM	3.3029 mL	16.5147 mL	33.0295 mL
5 mM	0.6606 mL	3.3029 mL	6.6059 mL
10 mM	0.3303 mL	1.6515 mL	3.3029 mL
50 mM	0.0661 mL	0.3303 mL	0.6606 mL

Please select the appropriate solvent to prepare the stock solution, according to the solubility of the product in different solvents. Please use it as soon as possible.

Note: The dilution table applies only to solid products. For liquid products, please calculate the stock solution based on the stated concentration and/or density.

Reference

Serban F, Daianu O, Tataranu LG, Artene SA, Emami G, Georgescu AM, Alexandru O, Purcaru SO, Tache DE, Danciulescu MM, Sfredel V, Dricu A. Silencing of epidermal growth factor, latrophilin and seven transmembrane domain-containing protein 1 (ELTD1) via siRNA-induced cell death in glioblastoma. *J Immunoassay Immunochem.* 2017;38(1):21-33. doi: 10.1080/15321819.2016.1209217. Epub 2016 Jul 5. PubMed PMID: 27379831.

Popescu AM, Alexandru O, Brindusa C, Purcaru SO, Tache DE, Tataranu LG, Taisescu C, Dricu A. Targeting the VEGF and PDGF signaling pathway in glioblastoma treatment. *Int J Clin Exp Pathol.* 2015 Jul 1;8(7):7825-37. eCollection 2015. PubMed PMID: 26339347; PubMed Central PMCID: PMC4555675.

Kim TS, Kawaguchi M, Suzuki M, Jung CG, Asai K, Shibamoto Y, Lavin MF, Khanna KK, Miura Y. The ZFH3 (ATBF1) transcription factor induces PDGFRB, which activates ATM in the cytoplasm to protect cerebellar neurons from oxidative stress. *Dis Model Mech.* 2010 Nov-Dec;3(11-12):752-62. doi: 10.1242/dmm.004689. Epub 2010 Sep 27. PubMed PMID: 20876357.

Akiyama N, Naruse K, Kobayashi Y, Nakamura N, Hamada Y, Nakashima E, Matsubara T, Oiso Y, Nakamura J. High glucose-induced upregulation of Rho/Rho-kinase via platelet-derived growth factor receptor-beta increases migration of aortic smooth muscle cells. *J Mol Cell Cardiol.* 2008 Aug;45(2):326-32. doi: 10.1016/j.yjmcc.2008.04.006. Epub 2008 Apr 25. PubMed PMID: 18561944.

Inhibitor · Natural Compounds · Compound Libraries · Recombinant Proteins

This product is for Research Use Only · Not for Human or Veterinary or Therapeutic Use

Tel:781-999-4286 E_mail:info@targetmol.com Address:34 Washington Street,Wellesley Hills,MA 02481