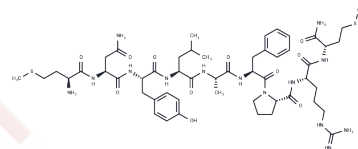


Small Cardioactive Peptide B (SCPB)

Chemical Properties

CAS No. :	84746-43-0
Formula:	C52H80N14O11S2
Molecular Weight:	1141.41
Storage:	Keep away from moisture Powder: -20°C for 3 years In solvent: -80°C for 1 year <small>Actual storage temperature shall be subject to the COA.</small>



Biological Description

Description	Small Cardioactive Peptide B (SCPB), a neurally active peptide, stimulates adenylate cyclase activity in particulate fractions of both heart and gill tissues with EC50s of 0.1 and 1.0 μ M, respectively.
Targets(IC50)	AChR

Preparing Stock Solutions

	1mg	5mg	10mg
1 mM	0.8761 mL	4.3805 mL	8.7611 mL
5 mM	0.1752 mL	0.8761 mL	1.7522 mL
10 mM	0.0876 mL	0.4381 mL	0.8761 mL
50 mM	0.0175 mL	0.0876 mL	0.1752 mL

Please select the appropriate solvent to prepare the stock solution, according to the solubility of the product in different solvents. Please use it as soon as possible.

Note: The dilution table applies only to solid products. For liquid products, please calculate the stock solution based on the stated concentration and/or density.

Reference

Cawthorpe DR, et al. The effects of small cardioactive peptide B on the isolated heart and gill of *Aplysia californica*. *Can J Physiol Pharmacol.* 1985 Aug;63(8):918-24.

Inhibitor · Natural Compounds · Compound Libraries · Recombinant Proteins

This product is for Research Use Only · Not for Human or Veterinary or Therapeutic Use

Tel:781-999-4286 E_mail:info@targetmol.com Address:34 Washington Street,Wellesley Hills,MA 02481