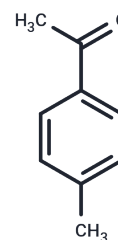


4'-Methylacetophenone

Chemical Properties

CAS No. :	122-00-9
Formula:	C ₉ H ₁₀ O
Molecular Weight:	134.18
Storage:	Powder: -20°C for 3 years In solvent: -80°C for 1 year Actual storage temperature shall be subject to the COA.



Biological Description

Description	4'-Methylacetophenone can be used as a fragrance material. It is widely occurred in volatile compounds in food and in some natural complex substances.
Targets(IC50)	Others

Solubility Information

Solubility	DMSO: 25 mg/mL (186.32 mM), Sonication is recommended. (< 1 mg/ml refers to the product slightly soluble or insoluble)
In vivo Formulation	10% DMSO+40% PEG300+5% Tween 80+45% Saline: 2 mg/mL (14.91 mM), Sonication is recommended. <i>Please add the solvents sequentially, clarifying the solution as much as possible before adding the next one. Dissolve by heating and/or sonication if necessary. Working solution is recommended to be prepared and used immediately. The formulation provided above is for reference purposes only. In vivo formulations may vary and should be modified based on specific experimental conditions.</i>

Preparing Stock Solutions

	1mg	5mg	10mg
1 mM	7.4527 mL	37.2634 mL	74.5268 mL
5 mM	1.4905 mL	7.4527 mL	14.9054 mL
10 mM	0.7453 mL	3.7263 mL	7.4527 mL
50 mM	0.1491 mL	0.7453 mL	1.4905 mL

Please select the appropriate solvent to prepare the stock solution, according to the solubility of the product in different solvents. Please use it as soon as possible.

Note: The dilution table applies only to solid products. For liquid products, please calculate the stock solution based on the stated concentration and/or density.

Reference

Api AM, et al. RIFM fragrance ingredient safety assessment, 4'-methylacetophenone, CAS Registry Number 122-00-9. Food Chem Toxicol. 2018 Dec;122 Suppl 1:S75-S83.

Inhibitor · Natural Compounds · Compound Libraries · Recombinant Proteins

This product is for Research Use Only · Not for Human or Veterinary or Therapeutic Use

Tel:781-999-4286 E_mail:info@targetmol.com Address:34 Washington Street,Wellesley Hills,MA 02481