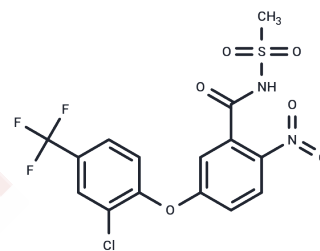


Fomesafen

Chemical Properties

CAS No. :	72178-02-0
Formula:	C ₁₅ H ₁₀ ClF ₃ N ₂ O ₆ S
Molecular Weight:	438.76
Storage:	Powder: -20°C for 3 years In solvent: -80°C for 1 year Actual storage temperature shall be subject to the COA.



Biological Description

Description	Fomesafen (PP-021) is a diphenyl ether herbicide and an inhibitor of efficient and selective protoporphyrinogen IX oxidase (PPO).
Targets(IC50)	Apoptosis,Others,ROS

Solubility Information

Solubility	DMSO: 50 mg/mL (113.96 mM),Sonication is recommended. (< 1 mg/ml refers to the product slightly soluble or insoluble)
In vivo Formulation	10% DMSO+40% PEG300+5% Tween 80+45% Saline: 2 mg/mL (4.56 mM),Sonication is recommended. <i>Please add the solvents sequentially, clarifying the solution as much as possible before adding the next one. Dissolve by heating and/or sonication if necessary. Working solution is recommended to be prepared and used immediately. The formulation provided above is for reference purposes only. In vivo formulations may vary and should be modified based on specific experimental conditions.</i>

Preparing Stock Solutions

	1mg	5mg	10mg
1 mM	2.2792 mL	11.3958 mL	22.7915 mL
5 mM	0.4558 mL	2.2792 mL	4.5583 mL
10 mM	0.2279 mL	1.1396 mL	2.2792 mL
50 mM	0.0456 mL	0.2279 mL	0.4558 mL

Please select the appropriate solvent to prepare the stock solution, according to the solubility of the product in different solvents. Please use it as soon as possible.

Note: The dilution table applies only to solid products. For liquid products, please calculate the stock solution based on the stated concentration and/or density.

Reference

- Khorrarn MS, et al. Reduced mobility of fomesafen through enhanced adsorption in biochar-amended soil. *Environ Toxicol Chem.* 2015 Jun;34(6):1258-66.
- Zhang Q, et al. Effects of fomesafen on soil enzyme activity, microbial population, and bacterial community composition. *Environ Monit Assess.* 2014 May;186(5):2801-12.
- Wu X, et al. Responses of soil microbial community to different concentration of fomesafen. *J Hazard Mater.* 2014 May 30;273:155-64.
- Costa AI, et al. Mobility and persistence of the herbicide fomesafen in soils cultivated with bean plants using SLE/LTP and HPLC/DAD. *Environ Sci Pollut Res Int.* 2015 Mar;22(5):3457-66.

Inhibitor · Natural Compounds · Compound Libraries · Recombinant Proteins

This product is for Research Use Only · Not for Human or Veterinary or Therapeutic Use

Tel:781-999-4286 E_mail:info@targetmol.com Address:34 Washington Street,Wellesley Hills,MA 02481