

Hexadimethrine bromide

Chemical Properties

CAS No. : 28728-55-4

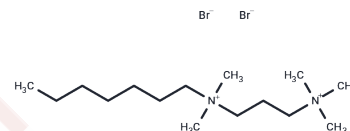
Formula: (C₁₃H₃₀N₂)_n.Br₂

Molecular Weight: 404.275

Keep away from moisture, Store under nitrogen

Storage: Pure form: -20°C for 3 years | In solvent: -80°C for 1 year

Actual storage temperature shall be subject to the COA.



Biological Description

Description	Hexadimethrine bromide (1,5-Dimethyl-1,5-diazaundecamethylene polymethobromide) is a synthetic polymer which agglutinates red blood cells, and used as a heparin antagonist.
Targets(IC50)	Others
In vitro	Hexadimethrine bromide impedes the proliferation of human mesenchymal stem cells during lentiviral transduction and is deemed non-toxic at low concentrations. Yet, at levels exceeding 10 µg/mL, it adversely impacts the proliferation of certain cell types. Moreover, cells treated with Hexadimethrine bromide and then trypsinized appear significantly enlarged under microscopic examination.

Solubility Information

Solubility	DMSO: 4.50 mg/mL (11.13 mM), Sonication and heating are recommended. H ₂ O: 125.00 mg/mL (309.20 mM), Sonication is recommended. (< 1 mg/ml refers to the product slightly soluble or insoluble)
------------	--

Preparing Stock Solutions

	1mg	5mg	10mg
1 mM	2.4735 mL	12.3677 mL	24.7353 mL
5 mM	0.4947 mL	2.4735 mL	4.9471 mL
10 mM	0.2474 mL	1.2368 mL	2.4735 mL
50 mM	0.0495 mL	0.2474 mL	0.4947 mL

Please select the appropriate solvent to prepare the stock solution, according to the solubility of the product in different solvents. Please use it as soon as possible.

Note: The dilution table applies only to solid products. For liquid products, please calculate the stock solution based on the stated concentration and/or density.

Reference

Lin P, et al. Polybrene inhibits human mesenchymal stem cell proliferation during lentiviral transduction. PLoS One. 2011;6(8):e23891.

Abe A, et al. Polybrene increases the efficiency of gene transfer by lipofection. Gene Ther. 1998 May;5(5):708-11.

Inhibitor · Natural Compounds · Compound Libraries · Recombinant Proteins

This product is for Research Use Only · Not for Human or Veterinary or Therapeutic Use

Tel:781-999-4286 E_mail:info@targetmol.com Address:34 Washington Street,Wellesley Hills,MA 02481