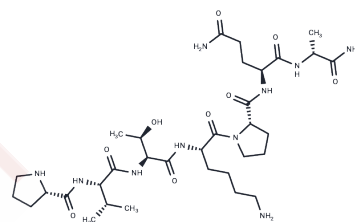


Lagatide

Chemical Properties

CAS No. :	157476-77-2
Formula:	C ₃₃ H ₅₈ N ₁₀ O ₉
Molecular Weight:	738.88
Storage:	Keep away from moisture Powder: -20°C for 3 years In solvent: -80°C for 1 year <small>Actual storage temperature shall be subject to the COA.</small>



Biological Description

Description	Lagatide is a synthetic heptapeptide that has antisecretory activity.
-------------	---

Preparing Stock Solutions

	1mg	5mg	10mg
1 mM	1.3534 mL	6.767 mL	13.534 mL
5 mM	0.2707 mL	1.3534 mL	2.7068 mL
10 mM	0.1353 mL	0.6767 mL	1.3534 mL
50 mM	0.0271 mL	0.1353 mL	0.2707 mL

Please select the appropriate solvent to prepare the stock solution, according to the solubility of the product in different solvents. Please use it as soon as possible.

Note: The dilution table applies only to solid products. For liquid products, please calculate the stock solution based on the stated concentration and/or density.

Reference

Couturaud B, Baldo A, Mas A, Robin JJ. Improvement of the interfacial compatibility between cellulose and poly(L-lactide) films by plasma-induced grafting of L-lactide: the evaluation of the adhesive properties using a peel test. *J Colloid Interface Sci.* 2015 Jun 15;448:427-36. doi: 10.1016/j.jcis.2015.02.035. Epub 2015 Feb 21. PubMed PMID: 25752580.

Zhu JB, Chen EY. From meso-Lactide to Isotactic Polylactide: Epimerization by B/N Lewis Pairs and Kinetic Resolution by Organic Catalysts. *J Am Chem Soc.* 2015 Oct 7;137(39):12506-9. doi: 10.1021/jacs.5b08658. Epub 2015 Sep 24. PubMed PMID: 26388298.

Franke JH, Kosov DS. Adsorption and ring-opening of lactide on the chiral metal surface Pt(321)(S) studied by density functional theory. *J Chem Phys.* 2015 Jan 28;142(4):044703. doi: 10.1063/1.4906151. PubMed PMID: 25637999.

Messias AD, Martins KF, Motta AC, Duek EA. Synthesis, Characterization, and Osteoblastic Cell Culture of Poly(L-co-D,L-lactide-co-trimethylene carbonate) Scaffolds. *Int J Biomater.* 2014;2014:501789. doi: 10.1155/2014/501789. Epub 2014 Jun 25. PubMed PMID: 25053947; PubMed Central PMCID: PMC4099256.

Inhibitor · Natural Compounds · Compound Libraries · Recombinant Proteins

This product is for Research Use Only · Not for Human or Veterinary or Therapeutic Use

Tel:781-999-4286 E_mail:info@targetmol.com Address:34 Washington Street,Wellesley Hills,MA 02481