

Emodin 6-O- $\beta$ -D-glucoside

## Chemical Properties

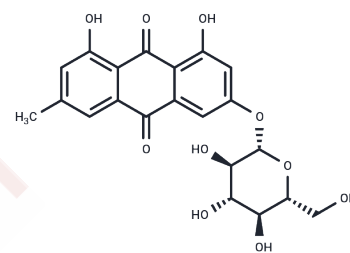
CAS No. : 34298-85-6

Formula: C<sub>21</sub>H<sub>20</sub>O<sub>10</sub>

Molecular Weight: 432.38

Storage: Keep away from moisture, Store at low temperature  
Powder: -20°C for 3 years | In solvent: -80°C for 1 year

Actual storage temperature shall be subject to the COA.



## Biological Description

Description	Emodin 6-O- $\beta$ -D-glucoside (Glucoemodin) can protect barrier integrity and inhibit HMGB1-mediated inflammatory responses, which suggests a potential use as a therapy for sepsis or septic shock. Emodin 6-O-beta-D-glucoside has anti-inflammatory activities and also may have significant therapeutic benefits against diabetic complications and atherosclerosis.
Targets(IC50)	Others
In vitro	Emodin-6-O- $\beta$ -D-glucoside (EG), a novel active compound from Reynoutria japonica, suppresses HMGB1 release, TNF- $\alpha$ production, and HMGB1-induced NF- $\kappa$ B activation in HUVECs.
In vivo	Emodin-6-O- $\beta$ -D-glucoside (EG) inhibits HMGB1-mediated hyperpermeability and leukocyte migration in mice, and increases the survival times of CLP-administered mice.

## Solubility Information

Solubility	DMSO: 65 mg/mL (150.33 mM), Sonication is recommended. (< 1 mg/ml refers to the product slightly soluble or insoluble)
------------	---------------------------------------------------------------------------------------------------------------------------

### Preparing Stock Solutions

---

	<b>1mg</b>	<b>5mg</b>	<b>10mg</b>
1 mM	2.3128 mL	11.5639 mL	23.1278 mL
5 mM	0.4626 mL	2.3128 mL	4.6256 mL
10 mM	0.2313 mL	1.1564 mL	2.3128 mL
50 mM	0.0463 mL	0.2313 mL	0.4626 mL

---

Please select the appropriate solvent to prepare the stock solution, according to the solubility of the product in different solvents. Please use it as soon as possible.

Note: The dilution table applies only to solid products. For liquid products, please calculate the stock solution based on the stated concentration and/or density.

**Inhibitor · Natural Compounds · Compound Libraries · Recombinant Proteins**

This product is for Research Use Only · Not for Human or Veterinary or Therapeutic Use

Tel:781-999-4286 E\_mail:info@targetmol.com Address:34 Washington Street,Wellesley Hills,MA 02481