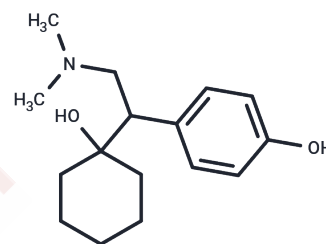


Desvenlafaxine

Chemical Properties

| | |
|-------------------|---|
| CAS No. : | 93413-62-8 |
| Formula: | C ₁₆ H ₂₅ NO ₂ |
| Molecular Weight: | 263.38 |
| Storage: | Powder: -20°C for 3 years In solvent: -80°C for 1 year Actual storage temperature shall be subject to the COA. |



Biological Description

| | |
|---------------|---|
| Description | Desvenlafaxine (O-Desmethylvenlafaxine) is a cyclohexanol and phenol derivative and metabolite of venlafaxine that functions as a serotonin and noradrenaline reuptake inhibitor (SNRI) and is used as an antidepressive agent. |
| Targets(IC50) | 5-HT Receptor, Norepinephrine, Serotonin Transporter |
| In vitro | In male rats, the oral administration of Desvenlafaxine Succinate penetrates the brain and hypothalamus, significantly increasing extracellular norepinephrine levels. |
| In vivo | Desvenlafaxine Succinate inhibits the neuronal uptake of serotonin (5-HT) and norepinephrine (NE) with IC ₅₀ values of 47.3 nM and 531.3 nM, respectively. It exhibits weak binding affinity to human dopamine (DA) transporters at a concentration of 100 μM. |

Solubility Information

| | |
|---------------------|---|
| Solubility | Ethanol: 3 mg/mL (11.39 mM), Sonication is recommended. DMSO: 16.67 mg/mL (63.29 mM), Sonication is recommended. (< 1 mg/ml refers to the product slightly soluble or insoluble) |
| In vivo Formulation | 10% DMSO+40% PEG300+5% Tween 80+45% Saline: 2 mg/mL (7.59 mM), Sonication is recommended. <i>Please add the solvents sequentially, clarifying the solution as much as possible before adding the next one. Dissolve by heating and/or sonication if necessary. Working solution is recommended to be prepared and used immediately. The formulation provided above is for reference purposes only. In vivo formulations may vary and should be modified based on specific experimental conditions.</i> |

Preparing Stock Solutions

| | 1mg | 5mg | 10mg |
|-------|-----------|-----------|-----------|
| 1 mM | 3.7968 mL | 18.984 mL | 37.968 mL |
| 5 mM | 0.7594 mL | 3.7968 mL | 7.5936 mL |
| 10 mM | 0.3797 mL | 1.8984 mL | 3.7968 mL |
| 50 mM | 0.0759 mL | 0.3797 mL | 0.7594 mL |

Please select the appropriate solvent to prepare the stock solution, according to the solubility of the product in different solvents. Please use it as soon as possible.

Note: The dilution table applies only to solid products. For liquid products, please calculate the stock solution based on the stated concentration and/or density.

Reference

Deecher DC, et al. J Pharmacol Exp Ther, 2006, 318(2), 657-665.

Sopko MA Jr, et al. Ann Pharmacother, 2008, 42(10), 1439-1446.

Inhibitor · Natural Compounds · Compound Libraries · Recombinant Proteins

This product is for Research Use Only · Not for Human or Veterinary or Therapeutic Use

Tel:781-999-4286 E_mail:info@targetmol.com Address:34 Washington Street,Wellesley Hills,MA 02481