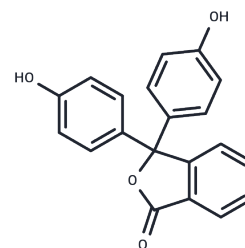


Phenolphthalein

Chemical Properties

CAS No. :	77-09-8
Formula:	C ₂₀ H ₁₄ O ₄
Molecular Weight:	318.32
Storage:	Keep away from direct sunlight Powder: -20°C for 3 years In solvent: -80°C for 1 year <small>Actual storage temperature shall be subject to the COA.</small>



Biological Description

Description	Phenolphthalein (Phthalin) is an acid-base indicator which is colorless in acid solution, but turns pink to red as the solution becomes alkaline. It is used medicinally as a cathartic.
Targets(IC50)	Others
In vitro	<p>Instructions</p> <p>Phenolphthalein indicator (0.5% phenolphthalein ethanol solution) preparation method: Take 0.5g phenolphthalein, dissolve it in 95% ethanol, no need to add water, dilute to 100mL.</p> <p>Color change range: pH8.3 ~ 10.0 (colorless→red), add 1 ~ 2 drops to 100mL titration solution.</p> <p>The above information is based on published literature. Experimental procedures should be appropriately modified to meet specific research demands.</p>

Solubility Information

Solubility	DMSO: 60 mg/mL (188.49 mM),Sonication and heating are recommended. (< 1 mg/ml refers to the product slightly soluble or insoluble)
In vivo Formulation	<p>10% DMSO+40% PEG300+5% Tween-80+45% Saline: 2.5 mg/mL (7.85 mM),Sonication is recommended.</p> <p><i>Please add the solvents sequentially, clarifying the solution as much as possible before adding the next one. Dissolve by heating and/or sonication if necessary. Working solution is recommended to be prepared and used immediately. The formulation provided above is for reference purposes only. In vivo formulations may vary and should be modified based on specific experimental conditions.</i></p>

Preparing Stock Solutions

	1mg	5mg	10mg
1 mM	3.1415 mL	15.7075 mL	31.4149 mL
5 mM	0.6283 mL	3.1415 mL	6.283 mL
10 mM	0.3141 mL	1.5707 mL	3.1415 mL
50 mM	0.0628 mL	0.3141 mL	0.6283 mL

Please select the appropriate solvent to prepare the stock solution, according to the solubility of the product in different solvents. Please use it as soon as possible.

Note: The dilution table applies only to solid products. For liquid products, please calculate the stock solution based on the stated concentration and/or density.

Reference

Souto PC, et al. Exudate - phenolphthalein pH test for evaluation of validity in seeds of *Libidibia ferrea*. An Acad Bras Cienc. 2019 Oct 21;91(4):e20180734.

Inhibitor · Natural Compounds · Compound Libraries · Recombinant Proteins

This product is for Research Use Only · Not for Human or Veterinary or Therapeutic Use

Tel:781-999-4286 E_mail:info@targetmol.com Address:34 Washington Street,Wellesley Hills,MA 02481