

## MMAE-SMCC

## Chemical Properties

CAS No. : 2021179-11-1

Formula: C<sub>58</sub>H<sub>89</sub>N<sub>7</sub>O<sub>14</sub>S

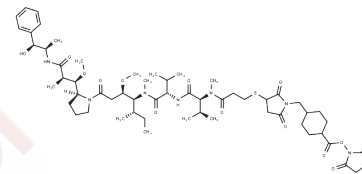
Molecular Weight: 1140.43

Storage:

Store at low temperature, The compound is unstable in solution. Please use soon

Powder: -20°C for 3 years

Actual storage temperature shall be subject to the COA.



## Biological Description

Description	MMAE-SMCC comprises the antitumour microtubule inhibitor MMAE and the non-cleavable ADC linker SMCC, enabling the preparation of antibody-drug conjugates (ADCs).
Targets(IC50)	Microtubule Associated, Drug-Linker Conjugates for ADC, PROTACs

## Solubility Information

Solubility	DMSO: 120 mg/mL (105.22 mM) ( $< 1$ mg/ml refers to the product slightly soluble or insoluble)
In vivo Formulation	10% DMSO+40% PEG300+5% Tween 80+45% Saline: 4 mg/mL (3.51 mM), Sonication is recommended. <i>Please add the solvents sequentially, clarifying the solution as much as possible before adding the next one. Dissolve by heating and/or sonication if necessary. Working solution is recommended to be prepared and used immediately. The formulation provided above is for reference purposes only. In vivo formulations may vary and should be modified based on specific experimental conditions.</i>

### Preparing Stock Solutions

---

	1mg	5mg	10mg
1 mM	0.8769 mL	4.3843 mL	8.7686 mL
5 mM	0.1754 mL	0.8769 mL	1.7537 mL
10 mM	0.0877 mL	0.4384 mL	0.8769 mL
50 mM	0.0175 mL	0.0877 mL	0.1754 mL

---

Please select the appropriate solvent to prepare the stock solution, according to the solubility of the product in different solvents. Please use it as soon as possible.

Note: The dilution table applies only to solid products. For liquid products, please calculate the stock solution based on the stated concentration and/or density.

### Reference

Tang F, et al. One-pot N-glycosylation remodeling of IgG with non-natural sialylglycopeptides enables glycosite-specific and dual-payload antibody-drug conjugates. *Org Biomol Chem*. 2016 Oct 12;14(40):9501-9518.

Tang Y, et al. Real-Time Analysis on Drug-Antibody Ratio of Antibody-Drug Conjugates for Synthesis, Process Optimization, and Quality Control. *Sci Rep*. 2017 Aug 10;7(1):7763.

**Inhibitor · Natural Compounds · Compound Libraries · Recombinant Proteins**

This product is for Research Use Only · Not for Human or Veterinary or Therapeutic Use

Tel:781-999-4286 E\_mail:info@targetmol.com Address:34 Washington Street,Wellesley Hills,MA 02481