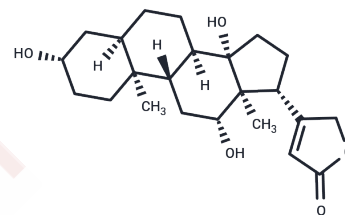


Digoxigenin

Chemical Properties

| | |
|-------------------|---|
| CAS No. : | 1672-46-4 |
| Formula: | C ₂₃ H ₃₄ O ₅ |
| Molecular Weight: | 390.51 |
| Storage: | Powder: -20°C for 3 years In solvent: -80°C for 1 year Actual storage temperature shall be subject to the COA. |



Biological Description

| | |
|---------------|---|
| Description | Digoxigenin, a therapeutic drug belonging to the group of cardiac glycosides, is widely used in the management of congestive heart failure and other cardiac diseases |
| Targets(IC50) | Others |

Solubility Information

| | |
|---------------------|---|
| Solubility | DMSO: 65 mg/mL (166.45 mM), Sonication is recommended. (< 1 mg/ml refers to the product slightly soluble or insoluble) |
| In vivo Formulation | 10% DMSO+40% PEG300+5% Tween 80+45% Saline: 2 mg/mL (5.12 mM), Sonication is recommended. <i>Please add the solvents sequentially, clarifying the solution as much as possible before adding the next one. Dissolve by heating and/or sonication if necessary. Working solution is recommended to be prepared and used immediately. The formulation provided above is for reference purposes only. In vivo formulations may vary and should be modified based on specific experimental conditions.</i> |

Preparing Stock Solutions

| | 1mg | 5mg | 10mg |
|-------|-----------|------------|------------|
| 1 mM | 2.5608 mL | 12.8038 mL | 25.6075 mL |
| 5 mM | 0.5122 mL | 2.5608 mL | 5.1215 mL |
| 10 mM | 0.2561 mL | 1.2804 mL | 2.5608 mL |
| 50 mM | 0.0512 mL | 0.2561 mL | 0.5122 mL |

Please select the appropriate solvent to prepare the stock solution, according to the solubility of the product in different solvents. Please use it as soon as possible.

Note: The dilution table applies only to solid products. For liquid products, please calculate the stock solution based on the stated concentration and/or density.

Inhibitor · Natural Compounds · Compound Libraries · Recombinant Proteins

This product is for Research Use Only · Not for Human or Veterinary or Therapeutic Use

Tel:781-999-4286 E_mail:info@targetmol.com Address:34 Washington Street,Wellesley Hills,MA 02481