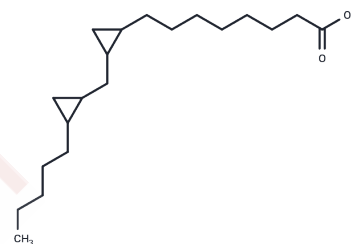


DCP-LA

Chemical Properties

CAS No. :	28399-31-7
Formula:	C ₂₀ H ₃₆ O ₂
Molecular Weight:	308.5
Storage:	Powder: -20°C for 3 years In solvent: -80°C for 1 year Actual storage temperature shall be subject to the COA.



Biological Description

Description	DCP-LA (FR236924), linoleic acid derivatives, selective and direct activation of PKCε.
Targets(IC50)	CaMK,Apoptosis,Phosphatase,PKC

Solubility Information

Solubility	DMSO: 5 mg/mL (16.21 mM),Sonication is recommended. (< 1 mg/ml refers to the product slightly soluble or insoluble)
------------	--

Preparing Stock Solutions

	1mg	5mg	10mg
1 mM	3.2415 mL	16.2075 mL	32.4149 mL
5 mM	0.6483 mL	3.2415 mL	6.483 mL
10 mM	0.3241 mL	1.6207 mL	3.2415 mL
50 mM	0.0648 mL	0.3241 mL	0.6483 mL

Please select the appropriate solvent to prepare the stock solution, according to the solubility of the product in different solvents. Please use it as soon as possible.

Note: The dilution table applies only to solid products. For liquid products, please calculate the stock solution based on the stated concentration and/or density.

Reference

Kanno T, et al. DCP-LA Activates Cytosolic PKCε by Interacting with the Phosphatidylserine Binding/Associating Sites Arg50 and Ile89 in the C2-Like Domain. Cell Physiol Biochem. 2015;37(1):193-200.

Inhibitor · Natural Compounds · Compound Libraries · Recombinant Proteins

This product is for Research Use Only · Not for Human or Veterinary or Therapeutic Use

Tel:781-999-4286 E_mail:info@targetmol.com Address:34 Washington Street,Wellesley Hills,MA 02481