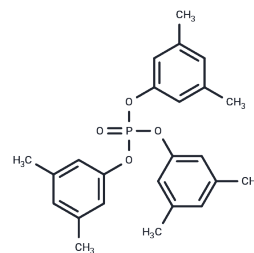


## Trixylyl phosphate

## Chemical Properties

CAS No. :	25155-23-1
Formula:	C <sub>24</sub> H <sub>27</sub> O <sub>4</sub> P
Molecular Weight:	410.44
Storage:	Powder: -20°C for 3 years   In solvent: -80°C for 1 year Actual storage temperature shall be subject to the COA.



## Biological Description

Description	Trixylyl phosphate (HSDB 6094) is a tricarbonyl phosphate, an accelerant used in many consumer and industrial products, such as plastics and hydraulic fluids.
Targets(IC50)	Others

## Solubility Information

Solubility	DMSO: Soluble, (< 1 mg/ml refers to the product slightly soluble or insoluble)
------------	---

## Preparing Stock Solutions

	1mg	5mg	10mg
1 mM	2.4364 mL	12.182 mL	24.3641 mL
5 mM	0.4873 mL	2.4364 mL	4.8728 mL
10 mM	0.2436 mL	1.2182 mL	2.4364 mL
50 mM	0.0487 mL	0.2436 mL	0.4873 mL

Please select the appropriate solvent to prepare the stock solution, according to the solubility of the product in different solvents. Please use it as soon as possible.

Note: The dilution table applies only to solid products. For liquid products, please calculate the stock solution based on the stated concentration and/or density.

### Reference

Kademoglou K, et al. Legacy and alternative flame retardants in Norwegian and UK indoor environment: Implications of human exposure via dust ingestion. *Environ Int.* 2017;102:48-56.

Mortensen A, et al. Delayed neurotoxicity of trixylenyl phosphate and a trialkyl/aryl phosphate mixture, and the modulating effect of atropine on tri-o-tolyl phosphate-induced neurotoxicity. *Neurotoxicology.* 1992;13(2):347-54.

Riess W, et al. Animal experiment studies of the toxicity of tri-xylol phosphate. *Beitr Gerichtl Med.* 1983;41:123-32.

Karkalis E, et al. Studies of the qualitative and quantitative determination of tri-xylol phosphate in biologic materials. *Beitr Gerichtl Med.* 1983;41:117-22.

**Inhibitor · Natural Compounds · Compound Libraries · Recombinant Proteins**

This product is for Research Use Only · Not for Human or Veterinary or Therapeutic Use

Tel:781-999-4286 E\_mail:info@targetmol.com Address:34 Washington Street,Wellesley Hills,MA 02481