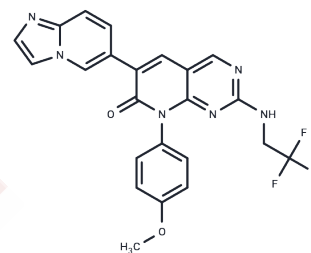


MAT2A-IN-2

Chemical Properties

CAS No. :	2565671-21-6
Formula:	C ₂₃ H ₁₇ F ₃ N ₆ O ₂
Molecular Weight:	466.42
Storage:	Powder: -20°C for 3 years In solvent: -80°C for 1 year Actual storage temperature shall be subject to the COA.



Biological Description

Description	MAT2A-IN-2, a potent inhibitor of MAT2A, shows potential for cancer disease research.
Targets(IC50)	Others,Somatostatin

Preparing Stock Solutions

	1mg	5mg	10mg
1 mM	2.144 mL	10.720 mL	21.4399 mL
5 mM	0.4288 mL	2.144 mL	4.288 mL
10 mM	0.2144 mL	1.072 mL	2.144 mL
50 mM	0.0429 mL	0.2144 mL	0.4288 mL

Please select the appropriate solvent to prepare the stock solution, according to the solubility of the product in different solvents. Please use it as soon as possible.

Note: The dilution table applies only to solid products. For liquid products, please calculate the stock solution based on the stated concentration and/or density.

Inhibitor · Natural Compounds · Compound Libraries · Recombinant Proteins

This product is for Research Use Only · Not for Human or Veterinary or Therapeutic Use

Tel:781-999-4286 E_mail:info@targetmol.com Address:34 Washington Street,Wellesley Hills,MA 02481