

ASP2535

Chemical Properties

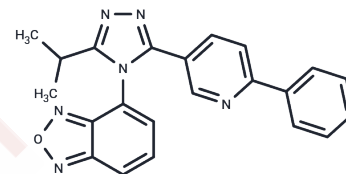
CAS No. : 374886-51-8

Formula: C₂₂H₁₈N₆O

Molecular Weight: 382.42

Storage: Powder: -20°C for 3 years | In solvent: -80°C for 1 year

Actual storage temperature shall be subject to the COA.



Biological Description

Description	ASP2535 is a potent, selective, orally bioavailable, brain-permeable, and centrally-active glycine transporter-1 (GlyT1) inhibitor that can improve cognitive impairment in animal models of schizophrenia and Alzheimer's disease[1].
Targets(IC50)	GlyT
In vitro	ASP2535 potently inhibits rat GlyT1 (IC ₅₀ =92 nM) with 50-fold selectivity over rat glycine transporter-2 (GlyT2) in vitro[1].
In vivo	ASP2535 (1-3 mg/kg, p.o.) improves the PCP-induced deficit in prepulse inhibition in rats[1]. ASP2535 (0.3-3 mg/kg; p.o) attenuates working memory deficit in MK-801-treated mice and visual learning deficit in neonatally phencyclidine (PCP)-treated mice

Preparing Stock Solutions

	1mg	5mg	10mg
1 mM	2.6149 mL	13.0746 mL	26.1493 mL
5 mM	0.523 mL	2.6149 mL	5.2299 mL
10 mM	0.2615 mL	1.3075 mL	2.6149 mL
50 mM	0.0523 mL	0.2615 mL	0.523 mL

Please select the appropriate solvent to prepare the stock solution, according to the solubility of the product in different solvents. Please use it as soon as possible.

Note: The dilution table applies only to solid products. For liquid products, please calculate the stock solution based on the stated concentration and/or density.

Reference

Harada K, et al. A novel glycine transporter-1 (GlyT1) inhibitor, ASP2535 (4-[3-isopropyl-5-(6-phenyl-3-pyridyl)-4H-1,2,4-triazol-4-yl]-2,1,3-benzoxadiazole), improves cognition in animal models of cognitive impairment in schizophrenia and Alzheimer's disease. Eur J Pharmacol. 2012 Jun 15;685(1-3):59-69.

Inhibitor · Natural Compounds · Compound Libraries · Recombinant Proteins

This product is for Research Use Only · Not for Human or Veterinary or Therapeutic Use

Tel:781-999-4286 E_mail:info@targetmol.com Address:34 Washington Street,Wellesley Hills,MA 02481