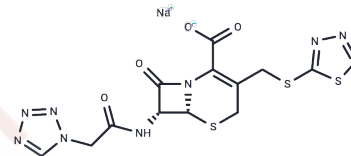


Ceftezole sodium

Chemical Properties

CAS No. :	41136-22-5
Formula:	C ₁₃ H ₁₁ N ₈ NaO ₄ S ₃
Molecular Weight:	462.46
Storage:	Powder: -20°C for 3 years In solvent: -80°C for 1 year Actual storage temperature shall be subject to the COA.



Biological Description

Description	Ceftezole sodium (Falomesin) is a broad-spectrum cephalosporin antibiotic active against gram-negative and gram-positive bacteria except for <i>Proteus vulgaris</i> , <i>Pseudomonas aeruginosa</i> , and <i>Serratia marcescens</i> . It has the inhibition of cell wall synthesis via affinity for penicillin-binding proteins. It also inhibits alpha-glucosidase.
Targets(IC50)	Anti-infection, Antibacterial, Antibiotic, Glucosidase

Solubility Information

Solubility	DMSO: 100 mg/mL (216.23 mM), Sonication is recommended. (< 1 mg/ml refers to the product slightly soluble or insoluble)
------------	--

Preparing Stock Solutions

	1mg	5mg	10mg
1 mM	2.1623 mL	10.8117 mL	21.6235 mL
5 mM	0.4325 mL	2.1623 mL	4.3247 mL
10 mM	0.2162 mL	1.0812 mL	2.1623 mL
50 mM	0.0432 mL	0.2162 mL	0.4325 mL

Please select the appropriate solvent to prepare the stock solution, according to the solubility of the product in different solvents. Please use it as soon as possible.

Note: The dilution table applies only to solid products. For liquid products, please calculate the stock solution based on the stated concentration and/or density.

Reference

- Nishida M, Murakawa T, Kamimura T, Okada N, Sakamoto H, Fukada S, Nakamoto S, Yokota Y, Miki K. In vitro and in vivo evaluation of ceftezole, a new cephalosporin derivative. *Antimicrob Agents Chemother.* 1976 Jul;10(1):1-13.
- Lee DS, Lee JM, Kim SU, Chang KT, Lee SH. Ceftezole, a cephem antibiotic, is an alpha-glucosidase inhibitor with in vivo anti-diabetic activity. *Int J Mol Med.* 2007 Sep;20(3):379-83.

Inhibitor · Natural Compounds · Compound Libraries · Recombinant Proteins

This product is for Research Use Only · Not for Human or Veterinary or Therapeutic Use

Tel:781-999-4286 E_mail:info@targetmol.com Address:34 Washington Street,Wellesley Hills,MA 02481