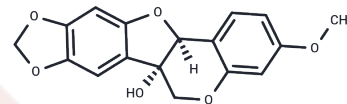


Pisatin

Chemical Properties

CAS No. :	20186-22-5
Formula:	C ₁₇ H ₁₄ O ₆
Molecular Weight:	314.29
Storage:	Keep away from direct sunlight Powder: -20°C for 3 years In solvent: -80°C for 1 year <small>Actual storage temperature shall be subject to the COA.</small>



Biological Description

Description	Pisatin is an isoflavone-type plant antitoxin derived from peas (<i>Pisum sativum</i>) that exhibits antifungal activity. Pisatin demonstrates significant inhibitory activity against various plant pathogenic fungi, including <i>Fusarium oxysporum</i> , <i>Botrytis cinerea</i> , and <i>Sclerotinia sclerotiorum</i> , with IC ₅₀ values ranging from 1 to 10 μM.
Targets(IC50)	Others

Preparing Stock Solutions

	1mg	5mg	10mg
1 mM	3.1818 mL	15.9089 mL	31.8177 mL
5 mM	0.6364 mL	3.1818 mL	6.3635 mL
10 mM	0.3182 mL	1.5909 mL	3.1818 mL
50 mM	0.0636 mL	0.3182 mL	0.6364 mL

Please select the appropriate solvent to prepare the stock solution, according to the solubility of the product in different solvents. Please use it as soon as possible.

Note: The dilution table applies only to solid products. For liquid products, please calculate the stock solution based on the stated concentration and/or density.

Reference

- Mai HD, et al. Cytotoxic prenylated isoflavone and bipterocarpan from *Milletia pachyloba*. *Planta Med.* 2010 Oct; 76(15):1739-42.
- Sander C, et al. L-Phenylalanine ammonia-lyase and pisatin induction by 5-bromodeoxyuridine in *Pisum sativum*. *Biochim Biophys Acta.* 1979 Jul 26;563(2):278-92.
- Coleman JJ, et al. An ABC transporter and a cytochrome P450 of *Nectria haematococca* MPVI are virulence factors on pea and are the major tolerance mechanisms to the phytoalexin pisatin. *Mol Plant Microbe Interact.* 2011;24(3): 368-376.

Inhibitor · Natural Compounds · Compound Libraries · Recombinant Proteins

This product is for Research Use Only · Not for Human or Veterinary or Therapeutic Use

Tel:781-999-4286 E_mail:info@targetmol.com Address:34 Washington Street,Wellesley Hills,MA 02481