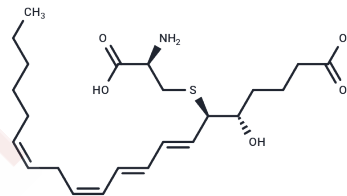


Leukotriene E4

Chemical Properties

CAS No. :	75715-89-8
Formula:	C ₂₃ H ₃₇ NO ₅ S
Molecular Weight:	439.61
Storage:	Store at low temperature
	Pure form: -20°C for 3 years In solvent: -80°C for 1 year

Actual storage temperature shall be subject to the COA.



Biological Description

Description	Leukotriene E4 (LTE4) (LTE4) is produced by the action of dipeptidyl peptidase on LTD4 and is a component of the Slow Reactive Substance of Anaphylaxis (SRS-A).LTE4 is present in plasma and urine and can be used to detect asthma.
Targets(IC50)	Endogenous Metabolite

Preparing Stock Solutions

	1mg	5mg	10mg
1 mM	2.2747 mL	11.3737 mL	22.7474 mL
5 mM	0.4549 mL	2.2747 mL	4.5495 mL
10 mM	0.2275 mL	1.1374 mL	2.2747 mL
50 mM	0.0455 mL	0.2275 mL	0.4549 mL

Please select the appropriate solvent to prepare the stock solution, according to the solubility of the product in different solvents. Please use it as soon as possible.

Note: The dilution table applies only to solid products. For liquid products, please calculate the stock solution based on the stated concentration and/or density.

Reference

- Marquette M, et al. Urinary Leukotriene E4 as a Biomarker in NSAID-Exacerbated Respiratory Disease (N-ERD): a Systematic Review and Meta-analysis. *Curr Allergy Asthma Rep.* 2022 Dec;22(12):209-229.
- Austen KF, et al. The leukotriene E4 puzzle: finding the missing pieces and revealing the pathobiologic implications. *J Allergy Clin Immunol.* 2009 Sep;124(3):406-14; quiz 415-6.

Inhibitor · Natural Compounds · Compound Libraries · Recombinant Proteins

This product is for Research Use Only · Not for Human or Veterinary or Therapeutic Use

Tel: 781-999-4286 E_mail: info@targetmol.com Address: 34 Washington Street, Wellesley Hills, MA 02481