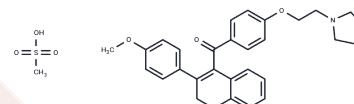


Trioxifene mesylate

Chemical Properties

CAS No. :	68307-81-3
Formula:	C ₃₁ H ₃₅ N ₁ O ₆ S
Molecular Weight:	549.68
Storage:	Powder: -20°C for 3 years In solvent: -80°C for 1 year Actual storage temperature shall be subject to the COA.



Biological Description

Description	Trioxifene mesylate is an antiestrogen that suppresses growth hormone secretion.
Targets(IC50)	Estrogen Receptor/ERR,Others

Preparing Stock Solutions

	1mg	5mg	10mg
1 mM	1.8192 mL	9.0962 mL	18.1924 mL
5 mM	0.3638 mL	1.8192 mL	3.6385 mL
10 mM	0.1819 mL	0.9096 mL	1.8192 mL
50 mM	0.0364 mL	0.1819 mL	0.3638 mL

Please select the appropriate solvent to prepare the stock solution, according to the solubility of the product in different solvents. Please use it as soon as possible.

Note: The dilution table applies only to solid products. For liquid products, please calculate the stock solution based on the stated concentration and/or density.

Reference

- Lee RW, Buzdar AU, Blumenschein GR, Hortobagyi GN. Trioxifene mesylate in the treatment of advanced breast cancer. *Cancer*. 1986 Jan 1;57(1):40-3. PubMed PMID: 3940620.
- Arafah B, Manni A, Pearson OH. Trioxifene mesylate (LY 133314): a new antiestrogen which inhibits growth hormone secretion in the rat. *Eur J Cancer*. 1980;Suppl 1:281-5. PubMed PMID: 7032941.
- Witte RS, Pruitt B, Tormey DC, Moss S, Rose DP, Falkson G, Carbone PP, Ramirez G, Falkson H, Pretorius FJ. A phase I/II investigation of trioxifene mesylate in advanced breast cancer. Clinical and endocrinologic effects. *Cancer*. 1986 Jan 1;57(1):34-9. PubMed PMID: 3079661.
- Neubauer BL, McNulty AM, Chedid M, Chen K, Goode RL, Johnson MA, Jones CD, Krishnan V, Lynch R, Osborne HE, Graff JR. The selective estrogen receptor modulator trioxifene (LY133314) inhibits metastasis and extends survival in the P4III rat prostatic carcinoma model. *Cancer Res*. 2003 Sep 15;63(18):6056-62. PubMed PMID: 14522935.

Inhibitor · Natural Compounds · Compound Libraries · Recombinant Proteins

This product is for Research Use Only · Not for Human or Veterinary or Therapeutic Use

Tel:781-999-4286 E_mail:info@targetmol.com Address:34 Washington Street,Wellesley Hills,MA 02481