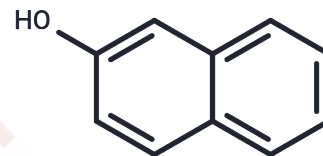


2-Naphthol

Chemical Properties

CAS No. :	135-19-3
Formula:	C ₁₀ H ₈ O
Molecular Weight:	144.17
Storage:	Powder: -20°C for 3 years In solvent: -80°C for 1 year Actual storage temperature shall be subject to the COA.



Biological Description

Description	2-Naphthol is a metabolite of naphthalene, catalyzed by cytochrome P450 isoforms (CYP 1A1, CYP 1A2, CYP 2A1, CYP 2E1, and CYP 2F2). 2-Naphthol is cytotoxic.
Targets(IC50)	Endogenous Metabolite

Solubility Information

Solubility	DMSO: 22.5 mg/mL (156.07 mM), Sonication is recommended. (< 1 mg/ml refers to the product slightly soluble or insoluble)
In vivo Formulation	10% DMSO+40% PEG300+5% Tween 80+45% Saline: 2 mg/mL (13.87 mM), Sonication is recommended. <i>Please add the solvents sequentially, clarifying the solution as much as possible before adding the next one. Dissolve by heating and/or sonication if necessary. Working solution is recommended to be prepared and used immediately. The formulation provided above is for reference purposes only. In vivo formulations may vary and should be modified based on specific experimental conditions.</i>

Preparing Stock Solutions

	1mg	5mg	10mg
1 mM	6.9363 mL	34.6813 mL	69.3626 mL
5 mM	1.3873 mL	6.9363 mL	13.8725 mL
10 mM	0.6936 mL	3.4681 mL	6.9363 mL
50 mM	0.1387 mL	0.6936 mL	1.3873 mL

Please select the appropriate solvent to prepare the stock solution, according to the solubility of the product in different solvents. Please use it as soon as possible.

Note: The dilution table applies only to solid products. For liquid products, please calculate the stock solution based on the stated concentration and/or density.

Reference

Adão P, et al. Dalton Trans. 2015 Jan 28; 44(4):1612-26.

Inhibitor · Natural Compounds · Compound Libraries · Recombinant Proteins

This product is for Research Use Only · Not for Human or Veterinary or Therapeutic Use

Tel:781-999-4286 E_mail:info@targetmol.com Address:34 Washington Street,Wellesley Hills,MA 02481