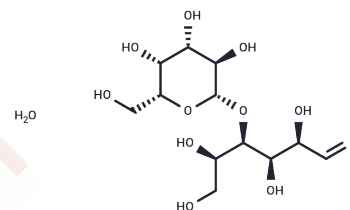


## Pharmatose DCL 14

## Chemical Properties

CAS No. :	64044-51-5
Formula:	C <sub>12</sub> H <sub>24</sub> O <sub>12</sub>
Molecular Weight:	360.31
Storage:	Powder: -20°C for 3 years   In solvent: -80°C for 1 year Actual storage temperature shall be subject to the COA.



## Biological Description

Description	Pharmatose DCL 14 (D-Lactose monohydrate) is the major sugar present in milk and the main source of energy supplied to the newborn mammalian in its mother's milk. Pharmatose DCL 14 is also an important osmotic regulator of lactation. It could regulate human's intestinal microflora.
Targets(IC50)	Endogenous Metabolite,Antibacterial

## Solubility Information

Solubility	DMSO: 50 mg/mL (138.77 mM),Sonication is recommended. Ethanol: Insoluble, H2O: 100 mg/mL (277.54 mM),Sonication is recommended. (< 1 mg/ml refers to the product slightly soluble or insoluble)
In vivo Formulation	10% DMSO+40% PEG300+5% Tween 80+45% Saline: 2 mg/mL (5.55 mM),Sonication is recommended. <i>Please add the solvents sequentially, clarifying the solution as much as possible before adding the next one. Dissolve by heating and/or sonication if necessary. Working solution is recommended to be prepared and used immediately. The formulation provided above is for reference purposes only. In vivo formulations may vary and should be modified based on specific experimental conditions.</i>

### Preparing Stock Solutions

---

	1mg	5mg	10mg
1 mM	2.7754 mL	13.8769 mL	27.7539 mL
5 mM	0.5551 mL	2.7754 mL	5.5508 mL
10 mM	0.2775 mL	1.3877 mL	2.7754 mL
50 mM	0.0555 mL	0.2775 mL	0.5551 mL

---

Please select the appropriate solvent to prepare the stock solution, according to the solubility of the product in different solvents. Please use it as soon as possible.

Note: The dilution table applies only to solid products. For liquid products, please calculate the stock solution based on the stated concentration and/or density.

### Reference

Kleessen B, et al. Effects of inulin and lactose on fecal microflora, microbial activity, and bowel habit in elderly constipated persons. *Am J Clin Nutr.* 1997 May;65(5):1397-402.

**Inhibitor · Natural Compounds · Compound Libraries · Recombinant Proteins**

This product is for Research Use Only · Not for Human or Veterinary or Therapeutic Use

Tel:781-999-4286 E\_mail:info@targetmol.com Address:34 Washington Street,Wellesley Hills,MA 02481