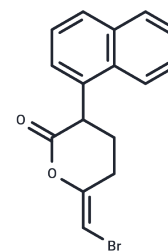


## Bromo-enol lactone

## Chemical Properties

CAS No. :	88070-98-8
Formula:	C <sub>16</sub> H <sub>13</sub> BrO <sub>2</sub>
Molecular Weight:	317.18
Storage:	Store at low temperature Powder: -20°C for 3 years   In solvent: -80°C for 1 year <small>Actual storage temperature shall be subject to the COA.</small>



## Biological Description

Description	Bromo-enol lactone ((6E)-Bromo-enol lactone) is a selective calcium-dependent phospholipase A2 (iPLA2 $\beta$ ) and serine protease inhibitor that attenuates nicotine-induced breast cancer cell proliferation and migration, inhibits voltage-gated Ca <sup>2+</sup> and transient receptor potential classical channels, and inhibits carrageenan-induced prostaglandin production and hyperalgesia in rat hind paws.
Targets(IC50)	Phospholipase
In vitro	Bromo-enol lactone inhibits exocytosis when stimulated using a Ca <sup>2+</sup> ionophore A23187, which passively transports Ca <sup>2+</sup> down a concentration gradient and also in permeabilised mast cells where Ca <sup>2+</sup> entry is no longer relevant. In RBL 2H3 and bone marrow-derived mast cells (BMMCs), Ca <sup>2+</sup> entry is critical for exocytosis. Moreover, Bromo-enol lactone has only a minor effect on antigen- or thapsigargin-stimulated Ca <sup>2+</sup> signalling, both the release from internal stores and sustained elevation due to Ca <sup>2+</sup> influx. [1]

## Solubility Information

Solubility	DMSO: 40 mg/mL (126.11 mM), Sonication is recommended. (< 1 mg/ml refers to the product slightly soluble or insoluble)
------------	---

### Preparing Stock Solutions

---

	1mg	5mg	10mg
1 mM	3.1528 mL	15.7639 mL	31.5278 mL
5 mM	0.6306 mL	3.1528 mL	6.3056 mL
10 mM	0.3153 mL	1.5764 mL	3.1528 mL
50 mM	0.0631 mL	0.3153 mL	0.6306 mL

---

Please select the appropriate solvent to prepare the stock solution, according to the solubility of the product in different solvents. Please use it as soon as possible.

Note: The dilution table applies only to solid products. For liquid products, please calculate the stock solution based on the stated concentration and/or density.

### Reference

Fensome-Green A, et al. Bromoenol lactone, an inhibitor of Group V1A calcium-independent phospholipase A2 inhibits antigen-stimulated mast cell exocytosis without blocking Ca<sup>2+</sup> influx. *Cell Calcium*. 2007 Feb;41(2):145-53.  
Takuma T, et al. Role of Ca<sup>2+</sup>-independent phospholipase A2 in exocytosis of amylase from parotid acinar cells. *J Biochem*. 1997 Jun;121(6):1018-24.

**Inhibitor · Natural Compounds · Compound Libraries · Recombinant Proteins**

This product is for Research Use Only · Not for Human or Veterinary or Therapeutic Use

Tel:781-999-4286 E\_mail:info@targetmol.com Address:34 Washington Street,Wellesley Hills,MA 02481