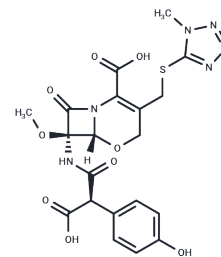


Latamoxef

Chemical Properties

CAS No. :	64952-97-2
Formula:	C ₂₀ H ₂₀ N ₆ O ₉ S
Molecular Weight:	520.47
Storage:	Powder: -20°C for 3 years In solvent: -80°C for 1 year Actual storage temperature shall be subject to the COA.



Biological Description

Description	Latamoxef is an oxacephem antibiotic and is a member of the cephalosporins.
Targets(IC50)	Others,Antibacterial,Antibiotic

Solubility Information

Solubility	DMSO: Soluble, H ₂ O: Insoluble, (< 1 mg/ml refers to the product slightly soluble or insoluble)
------------	--

Preparing Stock Solutions

	1mg	5mg	10mg
1 mM	1.9213 mL	9.6067 mL	19.2134 mL
5 mM	0.3843 mL	1.9213 mL	3.8427 mL
10 mM	0.1921 mL	0.9607 mL	1.9213 mL
50 mM	0.0384 mL	0.1921 mL	0.3843 mL

Please select the appropriate solvent to prepare the stock solution, according to the solubility of the product in different solvents. Please use it as soon as possible.

Note: The dilution table applies only to solid products. For liquid products, please calculate the stock solution based on the stated concentration and/or density.

Reference

Hagiya H, Tasaka K, Sendo T, Otsuka F. Clinical ineffectiveness of latamoxef for *Stenotrophomonas maltophilia* infection. *Infect Drug Resist.* 2015 Oct 20;8:353-7. doi: 10.2147/IDR.S90726. eCollection 2015. PubMed PMID: 26527890; PubMed Central PMCID: PMC4621224.

Ito A, Tatsumi Y, Wajima T, Nakamura R, Tsuji M. Potent antibacterial activities of latamoxef (moxalactam) against ESBL producing Enterobacteriaceae analyzed by Monte Carlo simulation. *Jpn J Antibiot.* 2014 Apr;67(2):109-22. PubMed PMID: 24956910.

Gu HY, Sun DM, Yu AM, Chen HY. [Polarographic behavior of latamoxef sodium and its trace determination]. *Yao Xue Xue Bao.* 1997 May;32(5):373-6. Chinese. PubMed PMID: 11498875.

Chen YC, Hung CC, Lin SF, Chang SC, Hsieh WC. Comparison of flomoxef with latamoxef in the treatment of sepsis and/or Gram-negative bacteremia in adult patients. *Int J Antimicrob Agents.* 1996 May;7(1):69-74. PubMed PMID: 18611739.

Inhibitor · Natural Compounds · Compound Libraries · Recombinant Proteins

This product is for Research Use Only · Not for Human or Veterinary or Therapeutic Use

Tel:781-999-4286 E_mail:info@targetmol.com Address:34 Washington Street,Wellesley Hills,MA 02481