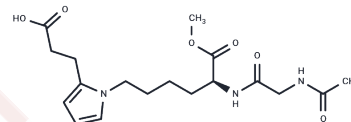


CEP dipeptide 1

Chemical Properties

CAS No. :	816432-15-2
Formula:	C18H27N3O6
Molecular Weight:	381.42
Storage:	Keep away from moisture Powder: -20°C for 3 years In solvent: -80°C for 1 year <small>Actual storage temperature shall be subject to the COA.</small>



Biological Description

Description	CEP dipeptide 1, a potent angiogenic compound, exhibits robust activity in promoting angiogenesis. This compound is specifically implicated in the pathogenesis of age-related macular degeneration (AMD).
-------------	--

Solubility Information

Solubility	H2O: 10 mg/mL (26.22 mM), Sonication is recommended. (< 1 mg/ml refers to the product slightly soluble or insoluble)
------------	---

Preparing Stock Solutions

	1mg	5mg	10mg
1 mM	2.6218 mL	13.1089 mL	26.2178 mL
5 mM	0.5244 mL	2.6218 mL	5.2436 mL
10 mM	0.2622 mL	1.3109 mL	2.6218 mL
50 mM	0.0524 mL	0.2622 mL	0.5244 mL

Please select the appropriate solvent to prepare the stock solution, according to the solubility of the product in different solvents. Please use it as soon as possible.

Note: The dilution table applies only to solid products. For liquid products, please calculate the stock solution based on the stated concentration and/or density.

Reference

Lu L, et al. Synthesis and structural characterization of carboxyethylpyrrole-modified proteins: mediators of age-related macular degeneration. *Bioorg Med Chem*. 2009 Nov 1;17(21):7548-61.

Inhibitor · Natural Compounds · Compound Libraries · Recombinant Proteins

This product is for Research Use Only · Not for Human or Veterinary or Therapeutic Use

Tel: 781-999-4286 E_mail: info@targetmol.com Address: 34 Washington Street, Wellesley Hills, MA 02481