

## Bethanechol chloride

## Chemical Properties

CAS No. : 590-63-6

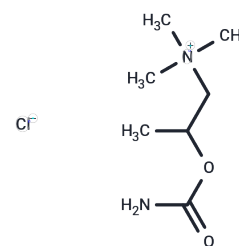
Formula: C7H17N2O2·Cl

Molecular Weight: 196.68

Keep away from direct sunlight

Storage: Pure form: -20°C for 3 years | In solvent: -80°C for 1 year

Actual storage temperature shall be subject to the COA.



## Biological Description

Description	Bethanechol chloride (Carbamyl-β-methylcholine chloride) is a slowly hydrolyzing muscarinic agonist with no nicotinic effects. It is used to increase smooth muscle tone in the GI tract following abdominal surgery or to treat urinary retention without obstruction. Possible side effects include hypotension, heart rate changes, and bronchial spasm.
Targets(IC50)	AChR

## Solubility Information

Solubility	H2O: 36 mg/mL (183.04 mM),Sonication is recommended. DMSO: 37 mg/mL (188.12 mM),Sonication is recommended. Ethanol: 37 mg/mL (188.12 mM),Sonication is recommended. (< 1 mg/ml refers to the product slightly soluble or insoluble)
------------	--

## Preparing Stock Solutions

	1mg	5mg	10mg
1 mM	5.0844 mL	25.422 mL	50.844 mL
5 mM	1.0169 mL	5.0844 mL	10.1688 mL
10 mM	0.5084 mL	2.5422 mL	5.0844 mL
50 mM	0.1017 mL	0.5084 mL	1.0169 mL

Please select the appropriate solvent to prepare the stock solution, according to the solubility of the product in different solvents. Please use it as soon as possible.

Note: The dilution table applies only to solid products. For liquid products, please calculate the stock solution based on the stated concentration and/or density.

Reference

Harbaugh RE, et al. J Neurosurg. 1989 Oct;71(4):481-6.

**Inhibitor · Natural Compounds · Compound Libraries · Recombinant Proteins**

This product is for Research Use Only · Not for Human or Veterinary or Therapeutic Use

Tel:781-999-4286 E\_mail:info@targetmol.com Address:34 Washington Street,Wellesley Hills,MA 02481