

$\alpha 2\beta 1$ Integrin Ligand Peptide

Chemical Properties

CAS No. : 134580-64-6

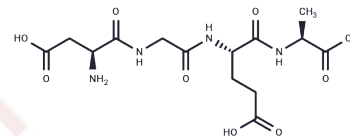
Formula: C₁₄H₂₂N₄O₉

Molecular Weight: 390.35

Keep away from moisture

Storage: Powder: -20°C for 3 years | In solvent: -80°C for 1 year

Actual storage temperature shall be subject to the COA.



Biological Description

Description	The Asp-Gly-Glu-Ala (DGEA) amino acid domain of type I collagen interacts with the $\alpha 2\beta 1$ integrin receptor on the cell membrane and mediates extracellular signals into cells. It is a potential antagonist of collagen receptors.
Targets(IC50)	Integrin

Solubility Information

Solubility	H ₂ O: Soluble, (< 1 mg/ml refers to the product slightly soluble or insoluble)
------------	---

Preparing Stock Solutions

	1mg	5mg	10mg
1 mM	2.5618 mL	12.809 mL	25.618 mL
5 mM	0.5124 mL	2.5618 mL	5.1236 mL
10 mM	0.2562 mL	1.2809 mL	2.5618 mL
50 mM	0.0512 mL	0.2562 mL	0.5124 mL

Please select the appropriate solvent to prepare the stock solution, according to the solubility of the product in different solvents. Please use it as soon as possible.

Note: The dilution table applies only to solid products. For liquid products, please calculate the stock solution based on the stated concentration and/or density.

Reference

Graham KL, et al. Effects on rotavirus cell binding and infection of monomeric and polymeric peptides containing $\alpha 2\beta 1$ and $\alpha \text{phx}\beta 2$ integrin ligand sequences. J Virol. 2004 Nov;78(21):11786-97.

Inhibitor · Natural Compounds · Compound Libraries · Recombinant Proteins

This product is for Research Use Only · Not for Human or Veterinary or Therapeutic Use

Tel:781-999-4286 E_mail:info@targetmol.com Address:34 Washington Street,Wellesley Hills,MA 02481