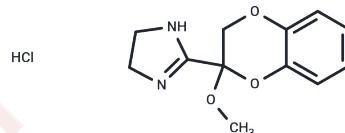


2-Methoxyidazoxan monohydrochloride

Chemical Properties

CAS No. :	109544-45-8
Formula:	C ₁₂ H ₁₄ N ₂ O ₃ ·HCl
Molecular Weight:	270.72
Storage:	Powder: -20°C for 3 years In solvent: -80°C for 1 year Actual storage temperature shall be subject to the COA.



Biological Description

Description	L-Albizziin (2-Methoxyidazoxan monohydrochloride) is a highly potent selective antagonist of the alpha 2r adrenergic receptor, with little or no antagonistic effect on imidazoline. It has a significantly higher affinity for the alpha 2D adrenergic receptor (pKd9.7) in guinea pigs than for the alpha 2A adrenergic receptor (pKd8.2) in rabbits.
Targets(IC50)	Adrenergic Receptor

Solubility Information

Solubility	H ₂ O: Soluble, DMSO: 4 mg/mL (14.78 mM), Sonication is recommended. (< 1 mg/ml refers to the product slightly soluble or insoluble)
------------	--

Preparing Stock Solutions

	1mg	5mg	10mg
1 mM	3.6939 mL	18.4693 mL	36.9385 mL
5 mM	0.7388 mL	3.6939 mL	7.3877 mL
10 mM	0.3694 mL	1.8469 mL	3.6939 mL
50 mM	0.0739 mL	0.3694 mL	0.7388 mL

Please select the appropriate solvent to prepare the stock solution, according to the solubility of the product in different solvents. Please use it as soon as possible.

Note: The dilution table applies only to solid products. For liquid products, please calculate the stock solution based on the stated concentration and/or density.

Reference

Clarke R W , Harris J . RX 821002 as a tool for physiological investigation of alpha(2)-adrenoceptors.[J]. C N S Drug Reviews, 2002, 8(2):177-192.

Mcallister K H . The alpha 2 adrenoceptor antagonists RX 821002 and yohimbine delay-dependently impair choice accuracy in a delayed non-matching-to-position task in rats.[J]. Psychopharmacology, 2001, 155(4):379-388.

Inhibitor · Natural Compounds · Compound Libraries · Recombinant Proteins

This product is for Research Use Only · Not for Human or Veterinary or Therapeutic Use

Tel:781-999-4286 E_mail:info@targetmol.com Address:34 Washington Street,Wellesley Hills,MA 02481