

Glutamyl-glutamic acid

Chemical Properties

CAS No. : 3929-61-1

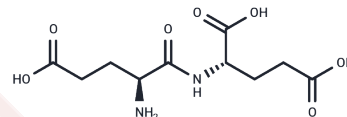
Formula: C₁₀H₁₆N₂O₇

Molecular Weight: 276.24

Keep away from moisture

Storage: Powder: -20°C for 3 years | In solvent: -80°C for 1 year

Actual storage temperature shall be subject to the COA.



Biological Description

Description	Glutamyl-glutamic acid (Glu-glu) is an Interpeptide Bridge in the Murein of Some Micrococci and Arthrobacter sp..
Targets(IC50)	Amino Acids and Derivatives

Solubility Information

Solubility	DMSO: 55 mg/mL (199.1 mM),Sonication is recommended. (< 1 mg/ml refers to the product slightly soluble or insoluble)
------------	---

Preparing Stock Solutions

	1mg	5mg	10mg
1 mM	3.620 mL	18.1002 mL	36.2004 mL
5 mM	0.724 mL	3.620 mL	7.2401 mL
10 mM	0.362 mL	1.810 mL	3.620 mL
50 mM	0.0724 mL	0.362 mL	0.724 mL

Please select the appropriate solvent to prepare the stock solution, according to the solubility of the product in different solvents. Please use it as soon as possible.

Note: The dilution table applies only to solid products. For liquid products, please calculate the stock solution based on the stated concentration and/or density.

Reference

Zhao CJ, Gänzle MG. Synthesis of Taste-Active γ -Glutamyl Dipeptides during Sourdough Fermentation by *Lactobacillus reuteri*. *J Agric Food Chem*. 2016 Oct 12;64(40):7561-7568. Epub 2016 Sep 29.

Juhl K, et al. Peptide-Based Optical uPAR Imaging for Surgery: In Vivo Testing of ICG-Glu-Glu-AE105. *PLoS One*. 2016 Feb 1;11(2):e0147428.

Shim J, et al. Modulation of sweet taste by umami compounds via sweet taste receptor subunit hT1R2. *PLoS One*. 2015 Apr 8;10(4):e0124030.

Kim MJ, et al. Umami-bitter interactions: the suppression of bitterness by umami peptides via human bitter taste receptor. *Biochem Biophys Res Commun*. 2015 Jan 9;456(2):586-90.

Inhibitor · Natural Compounds · Compound Libraries · Recombinant Proteins

This product is for Research Use Only · Not for Human or Veterinary or Therapeutic Use

Tel:781-999-4286 E_mail:info@targetmol.com Address:34 Washington Street,Wellesley Hills,MA 02481