

MAGLi 432

Chemical Properties

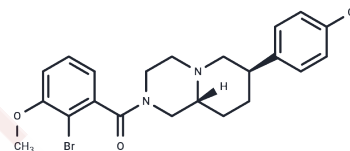
CAS No. : 2361575-20-2

Formula: C₂₂H₂₄BrClN₂O₂

Molecular Weight: 463.8

Storage: Powder: -20°C for 3 years | In solvent: -80°C for 1 year

Actual storage temperature shall be subject to the COA.



Biological Description

Description	MAGLi 432 is a potent, highly selective, non-covalent, reversible (MAGL) inhibitor that binds with high affinity to the MAGL active site, with IC ₅₀ values of 4.2 nM (human enzyme) and 3.1 nM (mouse enzyme), MAGLi 432 can be used to study neurological disorders such as chronic inflammation, multiple sclerosis, blood-brain barrier dysfunction, Alzheimer's disease and Parkinson's disease.
Targets(IC ₅₀)	Others,MAGL

Preparing Stock Solutions

	1mg	5mg	10mg
1 mM	2.1561 mL	10.7805 mL	21.561 mL
5 mM	0.4312 mL	2.1561 mL	4.3122 mL
10 mM	0.2156 mL	1.0781 mL	2.1561 mL
50 mM	0.0431 mL	0.2156 mL	0.4312 mL

Please select the appropriate solvent to prepare the stock solution, according to the solubility of the product in different solvents. Please use it as soon as possible.

Note: The dilution table applies only to solid products. For liquid products, please calculate the stock solution based on the stated concentration and/or density.

Inhibitor · Natural Compounds · Compound Libraries · Recombinant Proteins

This product is for Research Use Only · Not for Human or Veterinary or Therapeutic Use

Tel:781-999-4286 E_mail:info@targetmol.com Address:34 Washington Street,Wellesley Hills,MA 02481