

SW157765

Chemical Properties

CAS No. : 332063-87-3

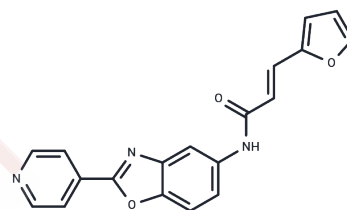
Formula: C₁₉H₁₃N₃O₃

Molecular Weight: 331.32

Store at low temperature

Storage: Powder: -20°C for 3 years | In solvent: -80°C for 1 year

Actual storage temperature shall be subject to the COA.



Biological Description

Description	SW157765 is a selective glucose transporter GLUT8 (SLC2A8) inhibitor, a prodrug of many compounds, that selectively inhibits the uptake of fluorescent 2-deoxyglucose (2DG) in SW157765-sensitive cells in a dose-dependent manner, and can be used for the study of lung cancer.
Targets(IC50)	transporter
In vitro	SW157765 selectively inhibits the uptake of 2-deoxyglucose (2DG) in a dose-dependent manner in SW157765-sensitive cells[1].

Solubility Information

Solubility	DMSO: 10 mg/mL (30.18 mM), Sonication and heating are recommended. (< 1 mg/ml refers to the product slightly soluble or insoluble)
------------	--

Preparing Stock Solutions

	1mg	5mg	10mg
1 mM	3.0182 mL	15.0912 mL	30.1823 mL
5 mM	0.6036 mL	3.0182 mL	6.0365 mL
10 mM	0.3018 mL	1.5091 mL	3.0182 mL
50 mM	0.0604 mL	0.3018 mL	0.6036 mL

Please select the appropriate solvent to prepare the stock solution, according to the solubility of the product in different solvents. Please use it as soon as possible.

Note: The dilution table applies only to solid products. For liquid products, please calculate the stock solution based on the stated concentration and/or density.

Reference

Pine SR, et al. Identifying therapeutic vulnerabilities in lung cancer: application of a chemistry-first approach. Transl Lung Cancer Res. 2018;7(Suppl 3):S265-S269.

McMillan EA, et al. Chemistry-First Approach for Nomination of Personalized Treatment in Lung Cancer. Cell. 2018; 173(4):864-878.e29.

Inhibitor · Natural Compounds · Compound Libraries · Recombinant Proteins

This product is for Research Use Only · Not for Human or Veterinary or Therapeutic Use

Tel:781-999-4286 E_mail:info@targetmol.com Address:34 Washington Street,Wellesley Hills,MA 02481