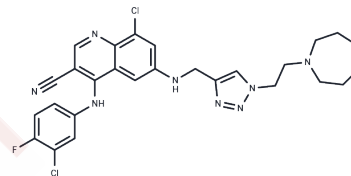


Cot inhibitor-1

Chemical Properties

CAS No. :	915365-57-0
Formula:	C ₂₇ H ₂₇ Cl ₂ FN ₈
Molecular Weight:	553.46
Storage:	Powder: -20°C for 3 years In solvent: -80°C for 1 year Actual storage temperature shall be subject to the COA.



Biological Description

Description	Cot inhibitor-1 is a selective inhibitor of Cot protein kinase (also known as Tpl2 or MAP3K8) (IC ₅₀ at 28 nM). Cot inhibitor-1 inhibited TNF-alpha production in human whole blood with IC ₅₀ of 5.7 nM. Cot is involved in a variety of cellular signaling pathways, particularly those involved in inflammation and immune responses. Cot inactivate-1 inhibits Cot activity and may have potential therapeutic effects on rheumatoid arthritis, inflammatory bowel disease and some types of cancer.
Targets(IC ₅₀)	MAPK, TNF

Solubility Information

Solubility	H ₂ O: 0.1 mg/mL (0.18 mM) DMSO: 55 mg/mL (99.37 mM), Sonication is recommended. (< 1 mg/ml refers to the product slightly soluble or insoluble)
In vivo Formulation	10% DMSO+40% PEG300+5% Tween 80+45% Saline: 2 mg/mL (3.61 mM), Sonication is recommended. <i>Please add the solvents sequentially, clarifying the solution as much as possible before adding the next one. Dissolve by heating and/or sonication if necessary. Working solution is recommended to be prepared and used immediately. The formulation provided above is for reference purposes only. In vivo formulations may vary and should be modified based on specific experimental conditions.</i>

Preparing Stock Solutions

	1mg	5mg	10mg
1 mM	1.8068 mL	9.0341 mL	18.0682 mL
5 mM	0.3614 mL	1.8068 mL	3.6136 mL
10 mM	0.1807 mL	0.9034 mL	1.8068 mL
50 mM	0.0361 mL	0.1807 mL	0.3614 mL

Please select the appropriate solvent to prepare the stock solution, according to the solubility of the product in different solvents. Please use it as soon as possible.

Note: The dilution table applies only to solid products. For liquid products, please calculate the stock solution based on the stated concentration and/or density.

Reference

Wu J, et al. Selective inhibitors of tumor progression loci-2 (Tpl2) kinase with potent inhibition of TNF-alpha production in human whole blood. *Bioorg Med Chem Lett.* 2009;19(13):3485-3488.

Inhibitor · Natural Compounds · Compound Libraries · Recombinant Proteins

This product is for Research Use Only · Not for Human or Veterinary or Therapeutic Use

Tel:781-999-4286 E_mail:info@targetmol.com Address:34 Washington Street,Wellesley Hills,MA 02481