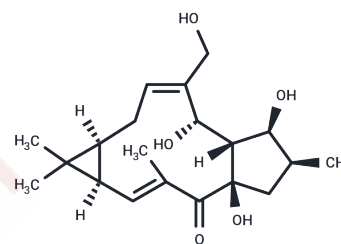


17-Hydroxyisolathyrol

Chemical Properties

CAS No. :	93551-00-9
Formula:	C ₂₀ H ₃₀ O ₅
Molecular Weight:	350.45
Storage:	Keep away from direct sunlight Powder: -20°C for 3 years In solvent: -80°C for 1 year <small>Actual storage temperature shall be subject to the COA.</small>



Biological Description

Description	γ -L-Glutamyl-L-alanine consists of γ -glutamate and alanine, and is a substrate for CRF21 (γ -glutamyl cyclotransferase, GGCT), a proteolytic breakdown product of larger proteins. γ -L-Glutamyl-L-alanine is a positive regulator of calcium-sensitive receptor (CaR) function.
Targets(IC50)	Others

Solubility Information

Solubility	DMSO: 50 mg/mL (142.67 mM), Sonication is recommended. H ₂ O: < 1 mg/mL (insoluble) (< 1 mg/ml refers to the product slightly soluble or insoluble)
In vivo Formulation	10% DMSO+40% PEG300+5% Tween 80+45% Saline: 2 mg/mL (5.71 mM), Sonication is recommended. <i>Please add the solvents sequentially, clarifying the solution as much as possible before adding the next one. Dissolve by heating and/or sonication if necessary. Working solution is recommended to be prepared and used immediately. The formulation provided above is for reference purposes only. In vivo formulations may vary and should be modified based on specific experimental conditions.</i>

Preparing Stock Solutions

	1mg	5mg	10mg
1 mM	2.8535 mL	14.2674 mL	28.5347 mL
5 mM	0.5707 mL	2.8535 mL	5.7069 mL
10 mM	0.2853 mL	1.4267 mL	2.8535 mL
50 mM	0.0571 mL	0.2853 mL	0.5707 mL

Please select the appropriate solvent to prepare the stock solution, according to the solubility of the product in different solvents. Please use it as soon as possible.

Note: The dilution table applies only to solid products. For liquid products, please calculate the stock solution based on the stated concentration and/or density.

Inhibitor · Natural Compounds · Compound Libraries · Recombinant Proteins

This product is for Research Use Only · Not for Human or Veterinary or Therapeutic Use

Tel:781-999-4286 E_mail:info@targetmol.com Address:34 Washington Street,Wellesley Hills,MA 02481