

Sulforaphene

Chemical Properties

CAS No. : 592-95-0

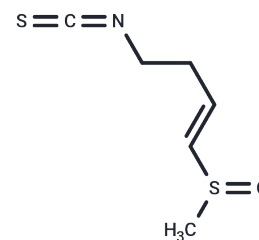
Formula: C₆H₉NOS₂

Molecular Weight: 175.27

Store at low temperature, Keep away from direct sunlight, Keep away from moisture

Storage: Pure form: -20°C for 3 years | In solvent: -80°C for 1 year

Actual storage temperature shall be subject to the COA.



Biological Description

Description	Sulforaphene is a natural product isolated from radish seeds, exhibits an ED50 against velvetleaf seedlings approximately 2×10^{-4} M. Sulforaphene promotes cancer cells apoptosis and inhibits migration via inhibiting EGFR, p-ERK1/2, NF- κ B and other signals.
Targets(IC50)	Apoptosis, ERK, EGFR, NF- κ B, Microtubule Associated
In vitro	A herbicidal compound was isolated from extracts of <i>Matthiola incana</i> and identified as Sulforaphene (4-methylsulfinyl-3-butenyl isothiocyanate). CONCLUSIONS: The ED50 of this compound against velvetleaf seedlings was approximately 2×10^{-4} M. Glucoraphenin, the glucosinolate that is the natural precursor of Sulforaphene, was less phytotoxic, with an ED50 of near 6×10^{-3} M.

Solubility Information

Solubility	DMSO: 100 mg/mL (570.55 mM), Sonication is recommended. (< 1 mg/ml refers to the product slightly soluble or insoluble)
In vivo Formulation	10% DMSO+40% PEG300+5% Tween 80+45% Saline: 4 mg/mL (22.82 mM), Sonication is recommended. <i>Please add the solvents sequentially, clarifying the solution as much as possible before adding the next one. Dissolve by heating and/or sonication if necessary. Working solution is recommended to be prepared and used immediately. The formulation provided above is for reference purposes only. In vivo formulations may vary and should be modified based on specific experimental conditions.</i>

Preparing Stock Solutions

	1mg	5mg	10mg
1 mM	5.7055 mL	28.5274 mL	57.0548 mL
5 mM	1.1411 mL	5.7055 mL	11.411 mL
10 mM	0.5705 mL	2.8527 mL	5.7055 mL
50 mM	0.1141 mL	0.5705 mL	1.1411 mL

Please select the appropriate solvent to prepare the stock solution, according to the solubility of the product in different solvents. Please use it as soon as possible.

Note: The dilution table applies only to solid products. For liquid products, please calculate the stock solution based on the stated concentration and/or density.

Reference

Herbicidal activity of sulforaphene from stock (*Matthiola incana*). J Chem Ecol. 1993 Oct;19(10):2279-84.

Sulforaphene inhibits triple negative breast cancer through activating tumor suppressor Egr1. Breast Cancer Res Treat. 2016 Jul;158(2):277-86.

Characterization of Anti-proliferative and Antibacterial Properties of Sulforaphene Obtained from Radish Seeds, Ashs Conference. 2013.

Inhibitor · Natural Compounds · Compound Libraries · Recombinant Proteins

This product is for Research Use Only · Not for Human or Veterinary or Therapeutic Use

Tel:781-999-4286 E_mail:info@targetmol.com Address:34 Washington Street,Wellesley Hills,MA 02481