

Isoreserpine

Chemical Properties

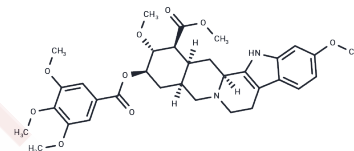
CAS No. : 482-85-9

Formula: C₃₃H₄₀N₂O₉

Molecular Weight: 608.68

Storage: Powder: -20°C for 3 years | In solvent: -80°C for 1 year

Actual storage temperature shall be subject to the COA.



Biological Description

Description	Isoreserpine is a biochemical.
Targets(IC50)	Others

Preparing Stock Solutions

	1mg	5mg	10mg
1 mM	1.6429 mL	8.2145 mL	16.429 mL
5 mM	0.3286 mL	1.6429 mL	3.2858 mL
10 mM	0.1643 mL	0.8214 mL	1.6429 mL
50 mM	0.0329 mL	0.1643 mL	0.3286 mL

Please select the appropriate solvent to prepare the stock solution, according to the solubility of the product in different solvents. Please use it as soon as possible.

Note: The dilution table applies only to solid products. For liquid products, please calculate the stock solution based on the stated concentration and/or density.

Reference

Gwak J, Song T, Song JY, Yun YS, Choi IW, Jeong Y, Shin JG, Oh S. Isoreserpine promotes beta-catenin degradation via Siah-1 up-regulation in HCT116 colon cancer cells. *Biochem Biophys Res Commun*. 2009 Sep 25;387(3):444-9. doi: 10.1016/j.bbrc.2009.07.027. Epub 2009 Jul 14. PubMed PMID: 19607803.

Jamil N, Afrozrizvi H, Ahmed I, Beg AE. Studies on the photostability of reserpine in parenteral solutions. *Pharmazie*. 1983 Jul;38(7):467-9. PubMed PMID: 6415678.

HUEBNER CF, KUEHNE ME, KORZUN B, SCHLITTLER E. Rauwolfia alkaloids XXVII: the conversion of 3-isoreserpine to reserpine. *Experientia*. 1956 Jul 15;12(7):249-50. PubMed PMID: 13344432.

Inhibitor · Natural Compounds · Compound Libraries · Recombinant Proteins

This product is for Research Use Only · Not for Human or Veterinary or Therapeutic Use

Tel:781-999-4286 E_mail:info@targetmol.com Address:34 Washington Street,Wellesley Hills,MA 02481