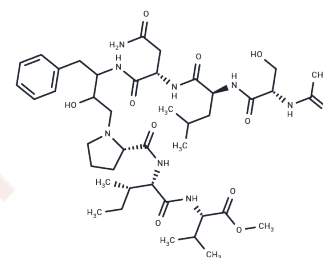


JG 365

Chemical Properties

CAS No. : 132748-20-0
 Formula: C42H68N8O11
 Molecular Weight: 861.04
 Storage: Powder: -20°C for 3 years | In solvent: -80°C for 1 year
 Actual storage temperature shall be subject to the COA.



Biological Description

Description	JG 365 is an HIV protease inhibitor.
Targets(IC50)	Others,HIV Protease

Preparing Stock Solutions

	1mg	5mg	10mg
1 mM	1.1614 mL	5.8069 mL	11.6139 mL
5 mM	0.2323 mL	1.1614 mL	2.3228 mL
10 mM	0.1161 mL	0.5807 mL	1.1614 mL
50 mM	0.0232 mL	0.1161 mL	0.2323 mL

Please select the appropriate solvent to prepare the stock solution, according to the solubility of the product in different solvents. Please use it as soon as possible.

Note: The dilution table applies only to solid products. For liquid products, please calculate the stock solution based on the stated concentration and/or density.

Reference

Johnson EC, Malito E, Shen Y, Pentelute B, Rich D, Florián J, Tang WJ, Kent SB. Insights from atomic-resolution X-ray structures of chemically synthesized HIV-1 protease in complex with inhibitors. *J Mol Biol.* 2007 Oct 26;373(3):573-86. Epub 2007 Aug 2. PubMed PMID: 17869270; PubMed Central PMCID: PMC2094697.

Cieplak P. Some computational aspects of theoretical anti-HIV drug design. *Acta Pol Pharm.* 2000 Nov;57 Suppl: 33-6. PubMed PMID: 11293258.

Popov ME, Kashparov IV, Rumsh LD, Popov EM. [Mechanism of aspartyl proteinase action. VII. Noncovalent complexes of HIV-1 aspartyl proteinase with substrate and substrate-like inhibitors]. *Bioorg Khim.* 1999 Dec;25 (12):911-22. Russian. PubMed PMID: 10734551.

Popov ME, Kashparov IV, Rumsh LD, Popov EM. [Mechanism of action of aspartic proteases. III. Conformational characteristics of HIV-1 protease inhibitor JG-365]. *Bioorg Khim.* 1999 Jun;25(6):418-22. Russian. PubMed PMID: 10505229.

Inhibitor · Natural Compounds · Compound Libraries · Recombinant Proteins

This product is for Research Use Only · Not for Human or Veterinary or Therapeutic Use

Tel:781-999-4286 E_mail:info@targetmol.com Address:34 Washington Street,Wellesley Hills,MA 02481