

Beta-Tocopherol

Chemical Properties

CAS No. : 148-03-8

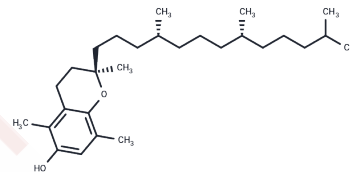
Formula: C₂₈H₄₈O₂

Molecular Weight: 416.68

Keep away from direct sunlight,Keep away from moisture,Store at low temperature

Storage: Pure form: -20°C for 3 years | In solvent: -80°C for 1 year

Actual storage temperature shall be subject to the COA.



Biological Description

Description	Beta-Tocopherol has effects on human erythroleukemia cell (HEL) adhesion induced by phorbol 12-myristate 13-acetate (PMA).
Targets(IC50)	ERK,MAPK,Tyrosinase
In vitro	METHODS: HEL cells were incubated with Beta-Tocopherol (50 μ M) for 24 hours, then PMA (25 nM) was added and incubated for 30 minutes. RESULTS Beta-Tocopherol blocked 11% of the PMA-induced adhesion. [1]

Solubility Information

Solubility	DMSO: 75 mg/mL (179.99 mM),Sonication is recommended. (< 1 mg/ml refers to the product slightly soluble or insoluble)
------------	--

Preparing Stock Solutions

	1mg	5mg	10mg
1 mM	2.3999 mL	11.9996 mL	23.9992 mL
5 mM	0.480 mL	2.3999 mL	4.7998 mL
10 mM	0.240 mL	1.200 mL	2.3999 mL
50 mM	0.048 mL	0.240 mL	0.480 mL

Please select the appropriate solvent to prepare the stock solution, according to the solubility of the product in different solvents. Please use it as soon as possible.

Note: The dilution table applies only to solid products. For liquid products, please calculate the stock solution based on the stated concentration and/or density.

Reference

Breyer I, Azzi A. Differential inhibition by alpha- and beta-tocopherol of human erythroleukemia cell adhesion: role of integrins. Free Radic Biol Med. 2001 Jun 15;30(12):1381-9.

Inhibitor · Natural Compounds · Compound Libraries · Recombinant Proteins

This product is for Research Use Only· Not for Human or Veterinary or Therapeutic Use

Tel:781-999-4286 E_mail:info@targetmol.com Address:34 Washington Street,Wellesley Hills,MA 02481